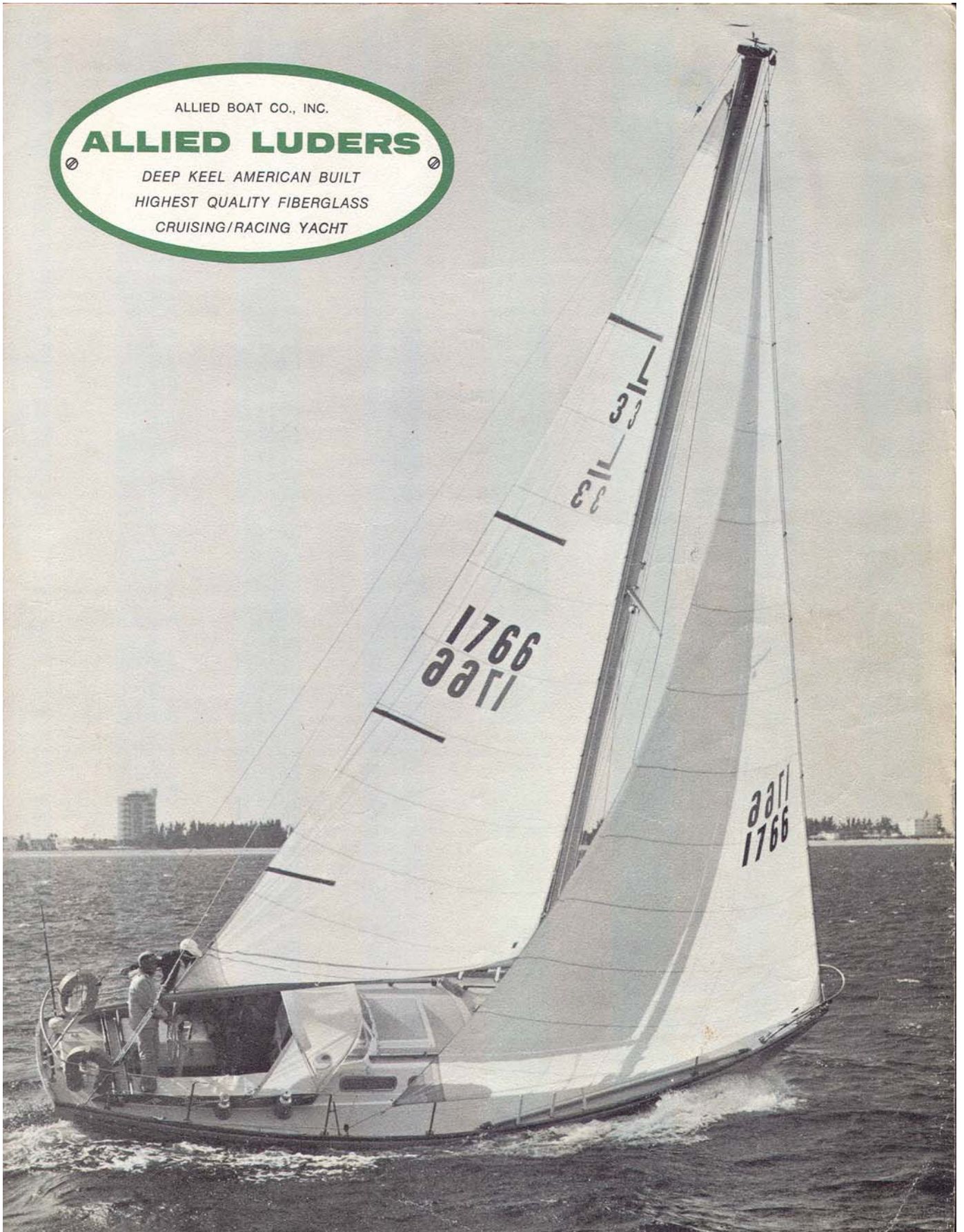


ALLIED BOAT CO., INC.

ALLIED LUDERS

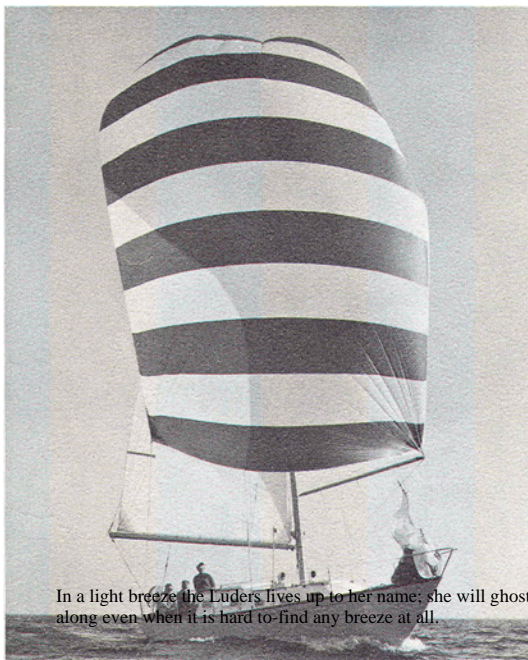
DEEP KEEL AMERICAN BUILT
HIGHEST QUALITY FIBERGLASS
CRUISING/RACING YACHT



ALLIED LUDERS

A DEEP KEEL AMERICAN BUILT YACHT FOR

“THE BEST IN RACING AND CRUISING”



In a light breeze the Luders lives up to her name: she will ghost along even when it is hard to find any breeze at all.



Luders is really at home particularly on the wind. Her rail is down but not under. Notice she is carrying a large # 1 genoa and "reefed main" - a fine combination.

The Luders 33 offers to the novice and experienced sailor the perfect combination. A luxurious cruising yacht loaded with extra gear that assures the ultimate in comfort and still retains the ability to win races. The Allied Boat Company has done this by following a three-step formula that guarantees success.

STEP ONE: DESIGN - Allied selected Bill Luders, creator of America's Cup contender "AMERICAN EAGLE" and many other race-winning yachts. Considered one of America's finest naval architects, he himself was a recent winner of the 5.5 class International Championship with his latest design.

STEP TWO: TESTING - Bill Luders' design for the Luders 33 was first carefully tank tested at Stevens Institute (see below). These tests, exhaustively carried out, proved without question that this hull would be -a racing contender.

STEP THREE: BUILDING - Allied Boat Company has built its reputation by using tested and proven building techniques. They took the Luders design and with customary care produced the Luders 33 as a fitting complement to their fleet of fiberglass auxiliary yachts, the finest available in the world. We can prove this statement in two ways:

1. We will let you be the judge if you visit our plant in Catskill, New York, and
2. By referring you to our owners and letting them tell you the story.

RESULTS IN RACING - The Luders already established as a top contender continues to earn her share of "silverware." In 1967, she won the Everett B. Morris Memorial Trophy for the best overall performance in the Storm Trysail Club Block Island Race Week. In the five races, she had four firsts and a third. For information on further triumphs, we will refer you directly to our proud owners.

CRUISING - Compare the Luders with any other yacht of her size. Why? Because she comes equipped with so many safety features (optional extras on other yachts.) Safety features such as stainless steel bow pulpit with running lights, 24" stainless steel lifeline stanchions with gated lifelines, interior handrails, 4-way explosion-proof safety switch, Coast Guard approved ventilation of the engine compartment, Monel gas tank, solid fiberglass rudder among the many. Cruising features that insure the comforts of home at no extra cost, a dinette that seats 8, 2 double berths, pressure water, 3-burner gimbaled stove with oven, enclosed toilet room with wash basin and vanity, a 200 pound 8-cubic foot icebox, large glass and beverage locker. Study and examine the Luders interior. In addition, look at that hull profile. You will see she has the speed of a 5.5 and the seaworthiness of a Gloucester fisherman. Her cutaway forefoot tells you she will come about in her own length. Her narrow entry means head seas won't stop her and she will not pound her crew into exhaustion like some light displacement full-bodied boats.

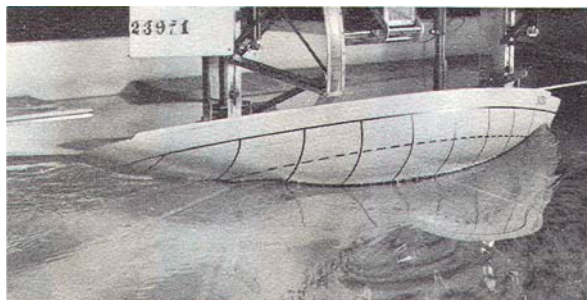
She is not tender. Her generous beam and deep 4500-pound keel gives her the stability to carry full sail when the rest of the fleet is reefing. Her hull is so strong that she can take a pounding that would open up seams in a wooden hull.

Take a look at the heft of her fittings. Mooring cleats are husky and all specially secured to hold fast in a hurricane. Tangs, chain plates, winches, turnbuckles, and lifeline stanchion bases all have the same heavy built-in strength. The six opening ports with screens are specially fitted. When dogged down they are guaranteed watertight.

Take a look below. Notice the teak cabin sole so well fitted to the bulkheads there is no place for lint and dirt to accumulate.

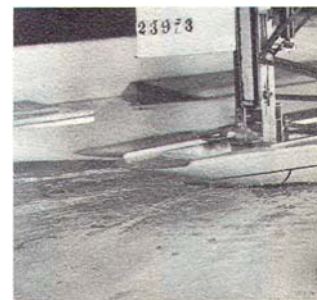
Locker space galore. The china locker will alone hold service for 8.

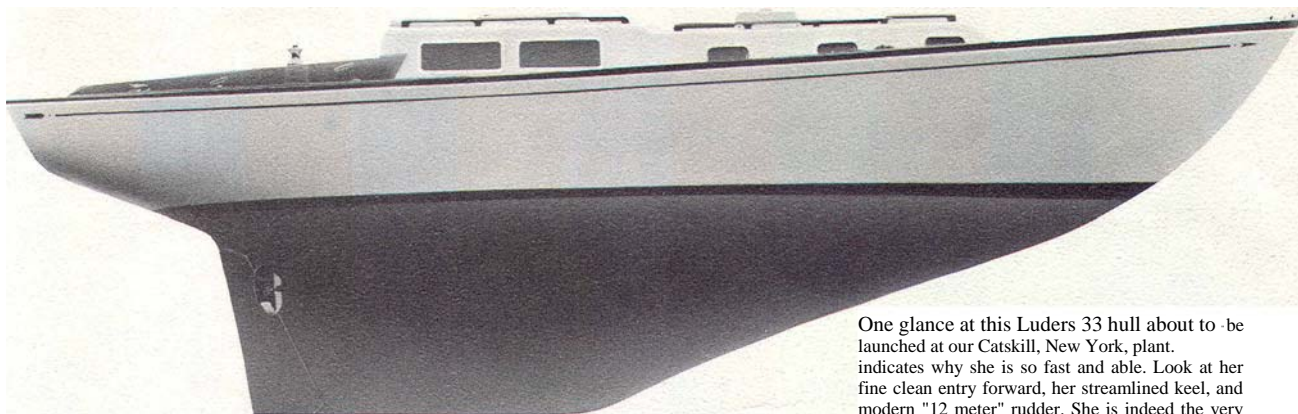
The extensive use of teak trim below and the meticulous joiner work makes her look like you think a boat should look. She is not a production line cost-saving compromise.



TANK TESTED

The Luders is one of the first fiberglass auxiliaries to be tank tested at Stevens Institute - where many of America's Cup defenders have been tried and proven before final construction. Tests showed the new Luders has the capability to be a top racing contender. She can go - and has!





One glance at this Luders 33 hull about to be launched at our Catskill, New York, plant, indicates why she is so fast and able. Look at her fine clean entry forward, her streamlined keel, and modern "12 meter" rudder. She is indeed the very essence of grace-yet with her 4500 pound solid lead keel, she is stiff and sea kindly in any weather.



Off the wind the Luders will stay with 40 footers and we have proven this. Notice how far forward she can carry her spinnaker.



The clean long lines of this graceful Luders is one reason why she is so close winded.

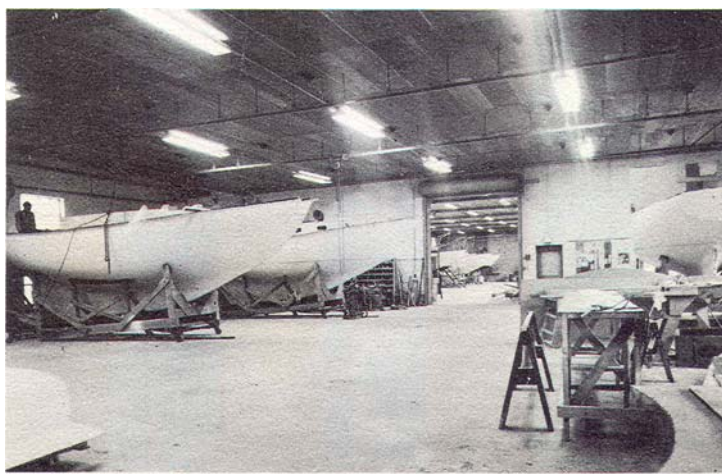


Here is the Luders doing 6% knots on the wind in a lumpy sea. Notice how close she can be trimmed.

STATEMENT OF POLICY

The Allied Boat Company, Inc. is owned and managed by a small group of dedicated blue water sailors who, knowing the Power of the sea, will not compromise quality *for* quantity.

Hence Allied's ability to provide the finest in fiberglass sailing auxiliaries styled and customized to an owner's particular taste.< No better example of the pride that Allied Boat Company has in the custom boats it builds is the fact that it now is announcing an unprecedented 5 year WARRANTY on the integrity of the hull, something that no other boat builder has ever done before.



ALLIED LUDER SPECIFICATIONS

<u>Length overall:</u>	33'
<u>Length waterline:</u>	24'
<u>Beam:</u>	10'
<u>Draft:</u>	5'
<u>Sail area:</u>	529 sq. ft.
<u>Displacement:</u> 13,600lb:	
<u>Ballast:</u>	4,500 lb." lead "
<u>Engine:</u>	4 Cyl. M60 Palmer

Rugged fiberglass construction
CCA Rating approx. 26



Full, wide, elbowroom is offered in this spacious galley. Generous space for gear, and handy stowage lockers.



This ample chart table and navigating nook is ideal for racing or cruising; underneath is the large 150-pound ice chest with 3" polyfoam insulation.



The ultimate in dinettes. Seating for eight. Sleeps two - in a 6'5" area of c°U1 tort. Ideal for dining and lounging after the race. Foul weather's no problem when' you can snuggle below in the comfort of the Luders "33".



Here is an optional layout with the standard four berths in the main cabin and' a folding table that will seat six very comfortably. The table folds up easily against the bulkheads.

STANDARD EQUIPMENT ON ALL ALLIED LUDERS

1. Dinette or Standard layout optional (Sleeps six)
2. Chrome or anodized aluminum Hardware
3. S.S. bow pulpit with running lights
4. Eight S. S. Stanchions, with gated Lifelines.
5. Anchor rode deck pipe
6. Anodized aluminum spars (grounded)
7. V4" S. S. 1x19 standing rigging
8. Complete Genoa gear with two 8' tracks
9. Eight 1/2" turnbuckles and toggles
10. Heavy S.S. Chain plates
11. S.S. halyards with Dacron tails
12. Roller reefing gear
13. Six large opening ports with screens
14. Two 4" dorade ventilators
15. Teak or mahogany exterior trim
16. Two #5 geared sheet winches
17. One #2 top action jib halyard
18. One #2 main halyard reel winch
19. One #2 top action mainsheet winch
20. Large glass, and beverage locker
21. Teak interior trim and cabin sole
22. Teak interior handrails
23. 6'5" full width berths with 4" thick Vinyl covered foam mattresses
24. Ten square feet of counter and work area in galley
25. 200 pounds ice capacity, 8 cubic feet Storage in ice chest
26. Formica covered bulkheads, choice of Colors.
27. King size chart table
28. Enclosed toilet room with [11]olded wash basin and vanity
29. Three-burner gimballed stove with oven 30. Pressure water
31. Bilge pump
32. Deluxe recessed instrument panel
33. Two heavy-duty 12-volt batteries
34. Master switch and fuse panel
35. 4-way safety starter switch
36. Parco liner prop. Shaft bearing
37. Engine room exhaust blower
38. 4-cylinder M60 Palmer engine; 50-amp Alternator
39. 30-gallon Mon-1 gas tank
40. 45-gallon S. S. water tank
41. Choice of hull colors
42. Coast Guard approved ventilation
43. Five-year Warranty

SPECIFICATIONS SUBJECT TO CHANGE WITHOUT NOTICE



ALLIED

Boat Company, Inc. Main Street,

Catskill, New York 12414

Printed in U.S.A. - 1/68